



SR-6 Polyclonal Antibody

Catalog No	YP-Ab-12822
Isotype	IgG
Reactivity	Human;Mouse;Rat
Applications	WB;ELISA
Gene Name	HTR6
Protein Name	5-hydroxytryptamine receptor 6
Immunogen	The antiserum was produced against synthesized peptide derived from human 5-HT-6. AA range:221-270
Specificity	SR-6 Polyclonal Antibody detects endogenous levels of SR-6 protein.
Formulation	Liquid in PBS containing 50% glycerol, 0.5% BSA and 0.02% sodium azide.
Source	Polyclonal, Rabbit,IgG
Purification	The antibody was affinity-purified from rabbit antiserum by affinity-chromatography using epitope-specific immunogen.
Dilution	Western Blot: 1/500 - 1/2000. ELISA: 1/20000. Not yet tested in other applications.
Concentration	1 mg/ml
Purity	≥90%
Storage Stability	-20°C/1 year
Synonyms	HTR6; 5-hydroxytryptamine receptor 6; 5-HT-6; 5-HT6; Serotonin receptor 6
Observed Band	47kD
Cell Pathway	Cell membrane; Multi-pass membrane protein.
Tissue Specificity	Expressed in several human brain regions, most prominently in the caudate nucleus.
Function	function:This is one of the several different receptors for 5-hydroxytryptamine (serotonin), a biogenic hormone that functions as a neurotransmitter, a hormone, and a mitogen. The activity of this receptor is mediated by G proteins that stimulate adenylate cyclase. It has a high affinity for tricyclic psychotropic drugs.,similarity:Belongs to the G-protein coupled receptor 1 family.,tissue specificity:Expressed in several human brain regions, most prominently in the caudate nucleus.,
Background	This gene encodes a protein that belongs to the seven-transmembrane G protein-coupled receptor family of proteins. The encoded protein couples with the Gs alpha subunit and stimulates adenylate cyclase to activate the cyclic AMP-dependent signaling pathway. This receptor is thought to regulate cholinergic neuronal transmission in the brain. Several antidepressants and antipsychotic drugs have a high affinity for this receptor. [provided by RefSeq, Aug 2013],

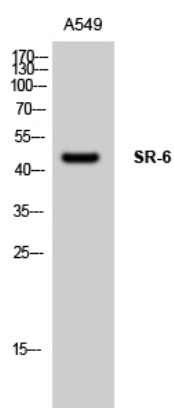
matters needing attention

Avoid repeated freezing and thawing!

Usage suggestions

This product can be used in immunological reaction related experiments. For more information, please consult technical personnel.

Products Images



Western Blot analysis of A549 cells using SR-6 Polyclonal Antibody